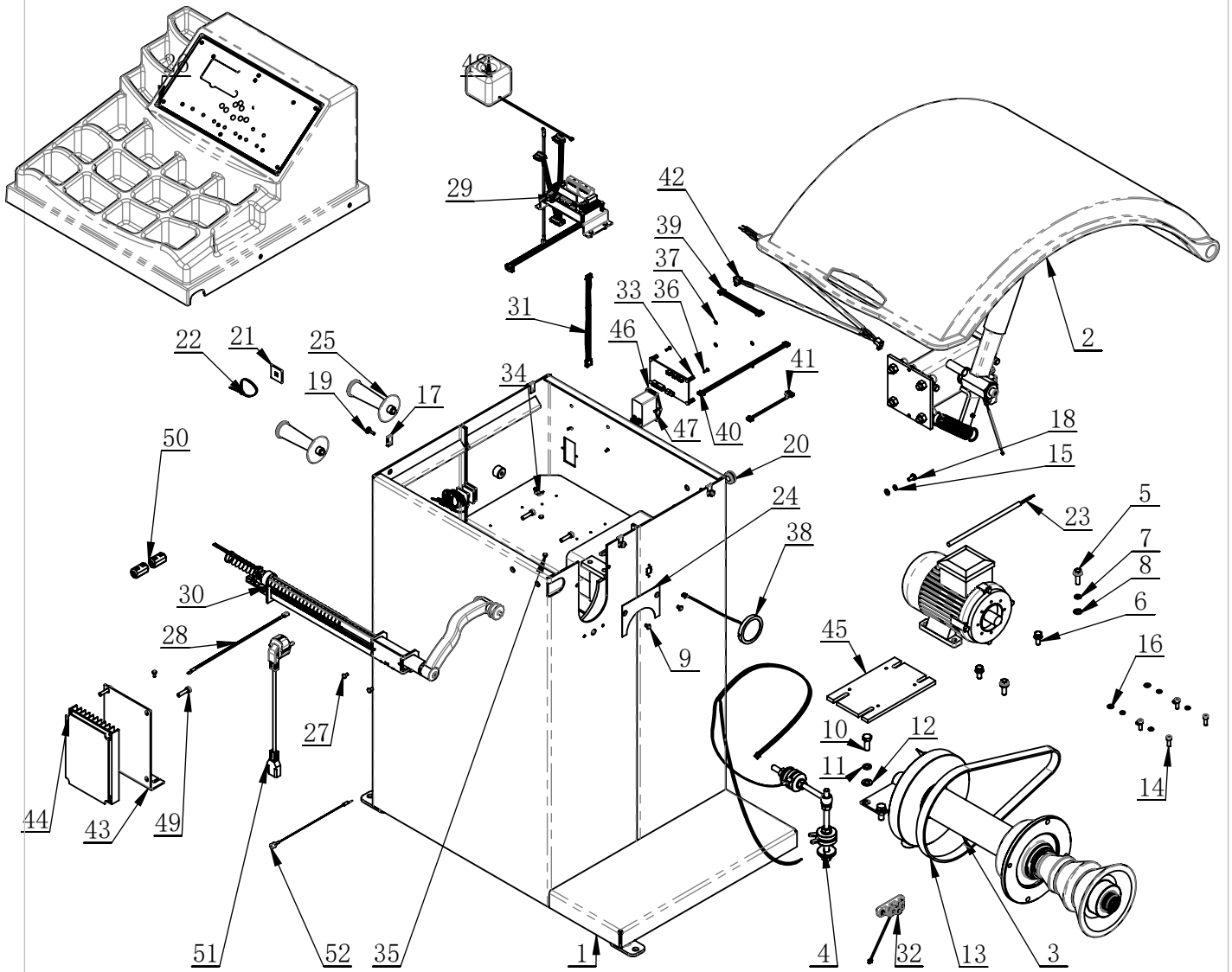
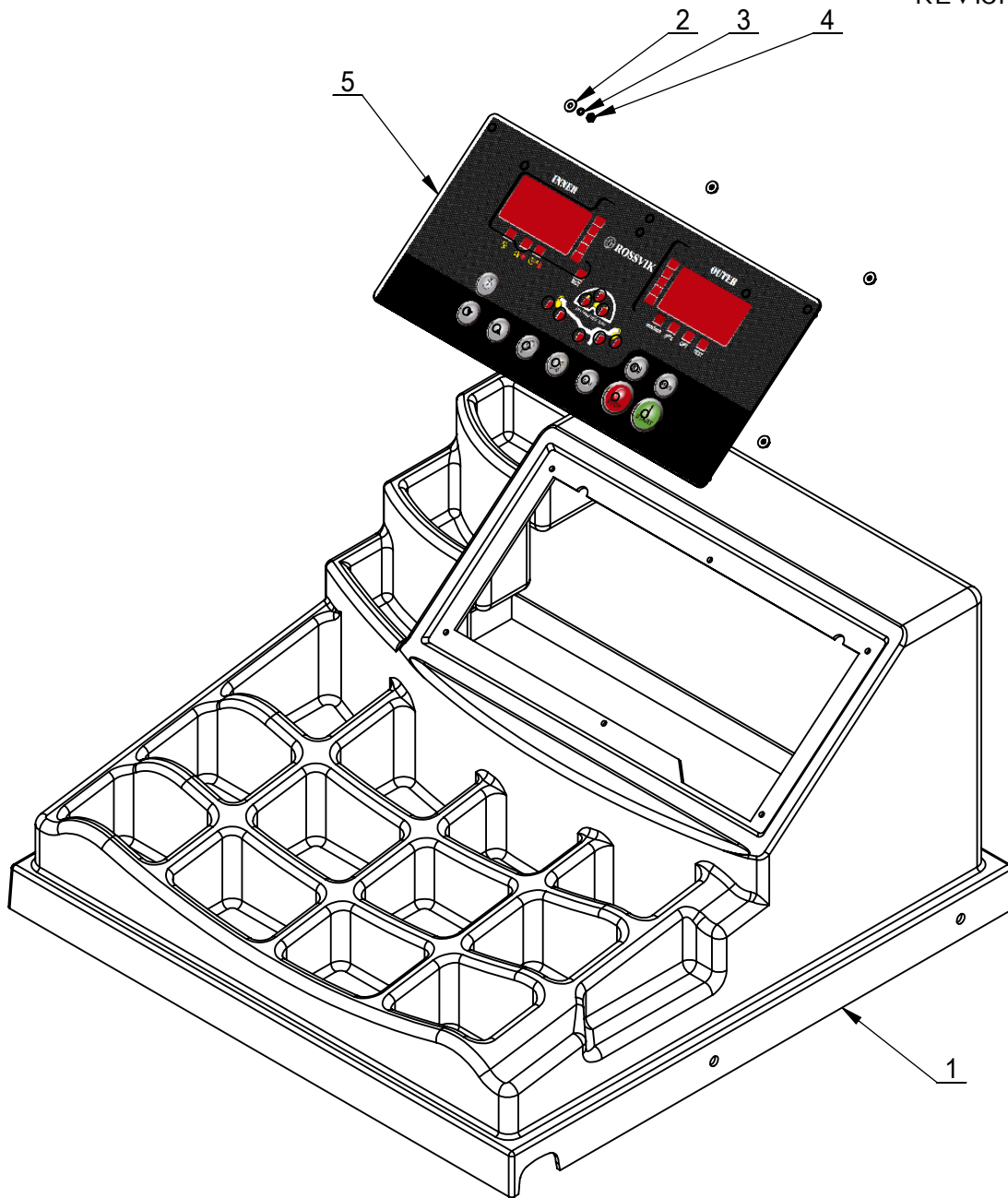


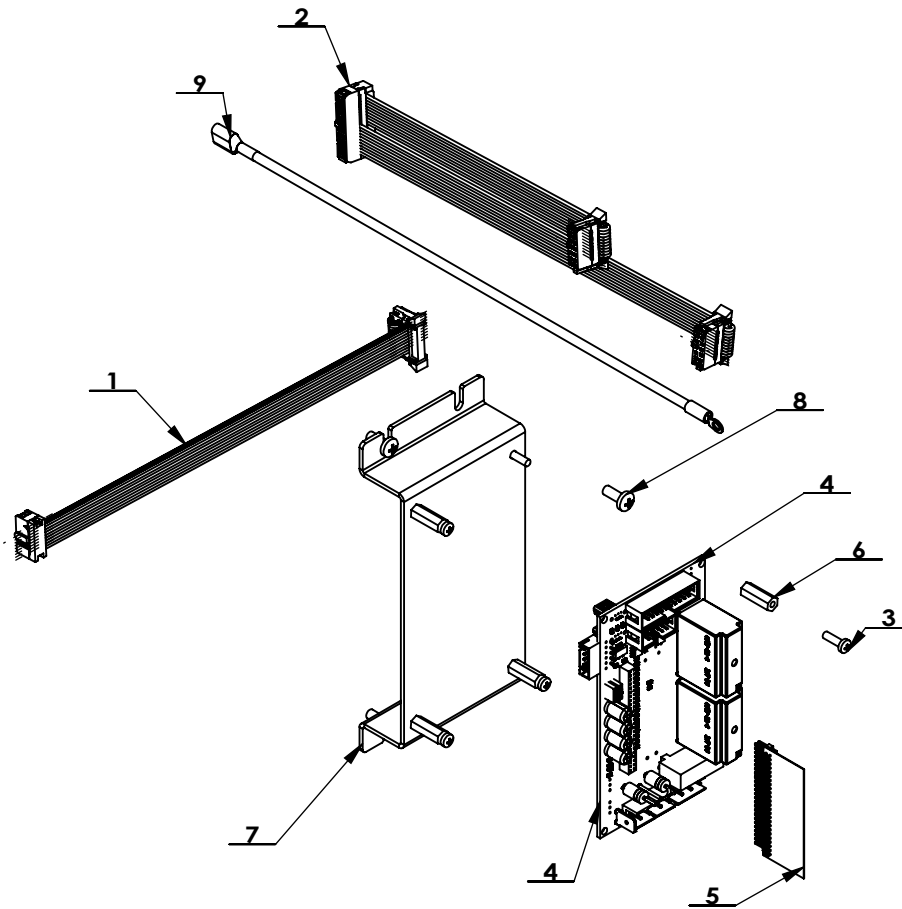
ITEM	PART.No	DESCRIPTION.	QT.Y
1	B-12-3000000RC	CB910GB	1
2	TB-S-0200000	ACCESSORY BOM	1
3	C-54-0000003	FILM WASHER	3
4	GB5780-M8×65	HEXANGULAR BOLT	2
5	GB41-M8	HEXANGULAR NUT	2
6	GB16824.1-ST8×40 C	HEXA FLANGE TAPPING SCREW	1
7	GB96.1-8	LARGE WASHER A GRADE	5



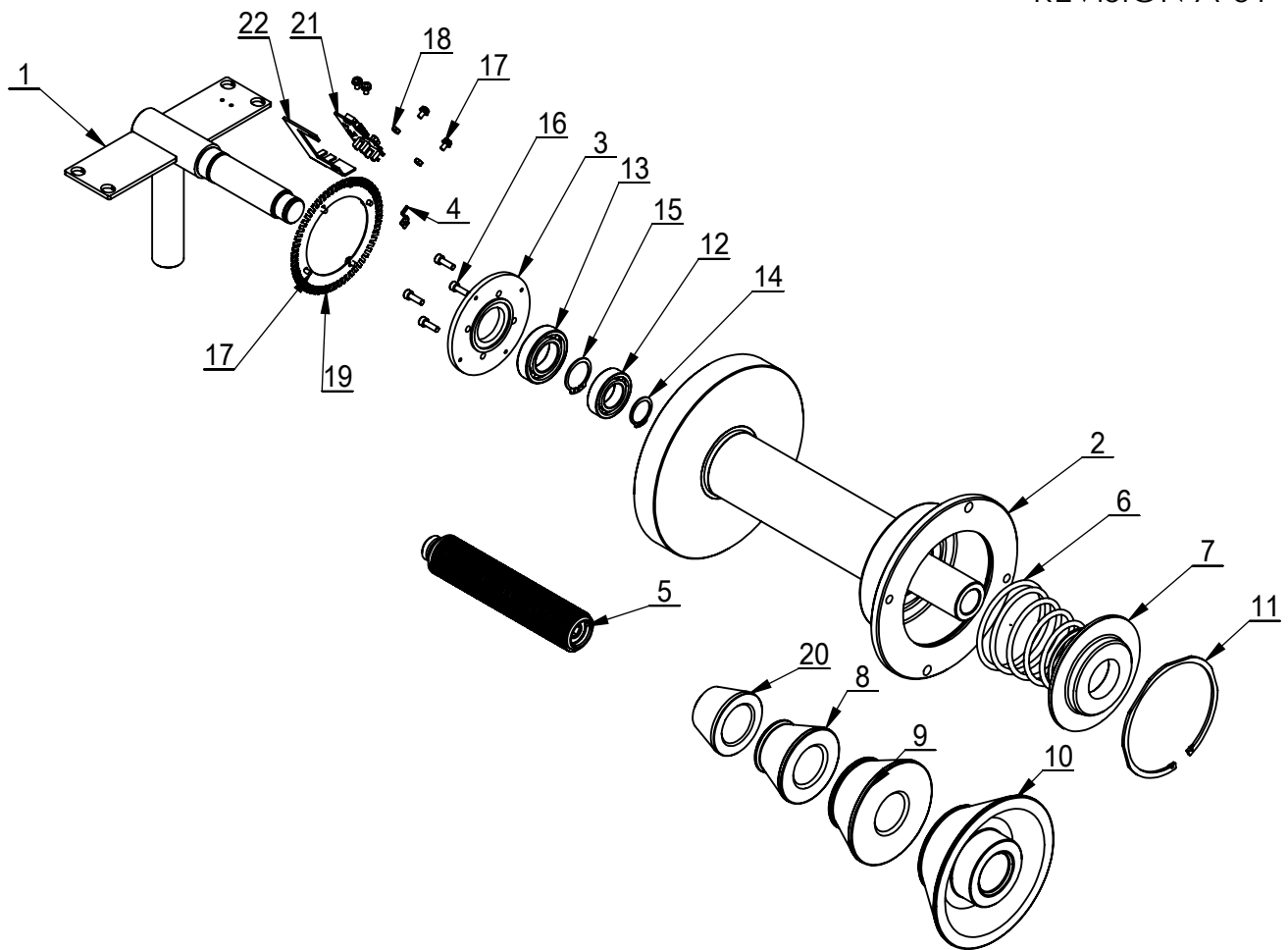
ITEM	PART. No	DESCRIPTION.	QTY
1	B-12-3100000RC	CLASSIS-WELD COMP	1
2	TB-F-0500000RC	HOOD	1
3	TB-P-0600000R	BALANCER SPINDLE	1
4	TB-P-0110000	PRESS SENSOR ASSEMBLY	1
5	GB5789-1986-8×25	HEXA FLANGE BOLT	2
6	GB5783-M8×20	HEXANGULAR BOLT	2
7	GB93-8	STANDARD SPRING WASHER	4
8	GB95-8	FLAT WASHER	4
9	GB973-M5×8-H	CROSS PANHEAD SCREW	2
10	GB5783-M10×25	HEXANGULAR BOLT	4
11	GB93-10	STANDARD SPRING WASHER	4
12	GB95-10	FLAT WASHER	4
13	B-01-1000009	WEDGE BELT (940mm)	1
14	GB70. 1-M6×16	SCREW	4
15	GB93-6	STANDARD SPRING WASHER	5
16	GB95-6	FLAT WASHER	5
17	B-53-1000007	NUT M4	4
18	GB818-M6×12-H	CROSS PANHEAD SCREW	1
19	B-53-1000006	SCREW M4	4
20	C-71-1000019	RUBBER GROMMET	1
21	B-53-1000008	FIX PLATE	4
22	B-53-1000009	NYLON BELT	5
23	TB-E-9000220RC	MOTOR	1
24	B-01-1000008	ASSESS HOLES COVER	1
25	TB-S-0100009	CONE HANG HANDLE	3
26	B-12-3200000RC	WEIGHT TRAY ASSEMBLY	1
27	GB819. 1-M5×10-H	SCREW	2
28	B-01-1008005	EARTH WIRE	1
29	B-55-1500000RC	CPU	1
30	TB-L-0800000RC	DRAWER ASSEMBLY	1
31	B-01-1008006	OPTICBACKPANEL CABLE	1
32	B-12-3300000	LASER ASSEMBLY	1
33	B-55-1500400	TRANSFORM BOARD ASSEM	1
34	B-73-1000019	E-RINGS	1
35	GB818-M4×10-H	CROSS PANHEAD SCREW	4
36	GB818-M3×10-H	CROSS PANHEAD SCREW	4
37	GB95-3	FLAT WASHER	4
38	B-12-3000100RC	LED LIGHT	1
39	B-12-3000004	POWER BOARD - CONVERSION BOARD CONTROL CABLE	1
40	B-12-3000005	POWER BOARD - CONVERSION BOARD CONTROL CABLE1	1
41	B-12-3000007	CONVERTER PLATE - FREQUENCY CONVERTER	1
42	B-12-3000006	SWITCH CONNECTION LINE	1
43	B-12-3000009	BRACKET	1
44	B-12-3000008	TRANSDUCER	1
45	B-12-3000002RC	MOTOR BASE PLATE	1
46	B-73-1000005	POWER SWICH	1
47	GB819. 1-M3×16-H	SCREW	2
48	B-12-3000004RC	AUDIO	1
49	GB70. 1-M6×25	SCREW	4
50	B-62-1300004	EMIFIL	2
51	TB-E-1002300	POWER CABLE	1
52	B-47-1000014	GROUND WIRE	1



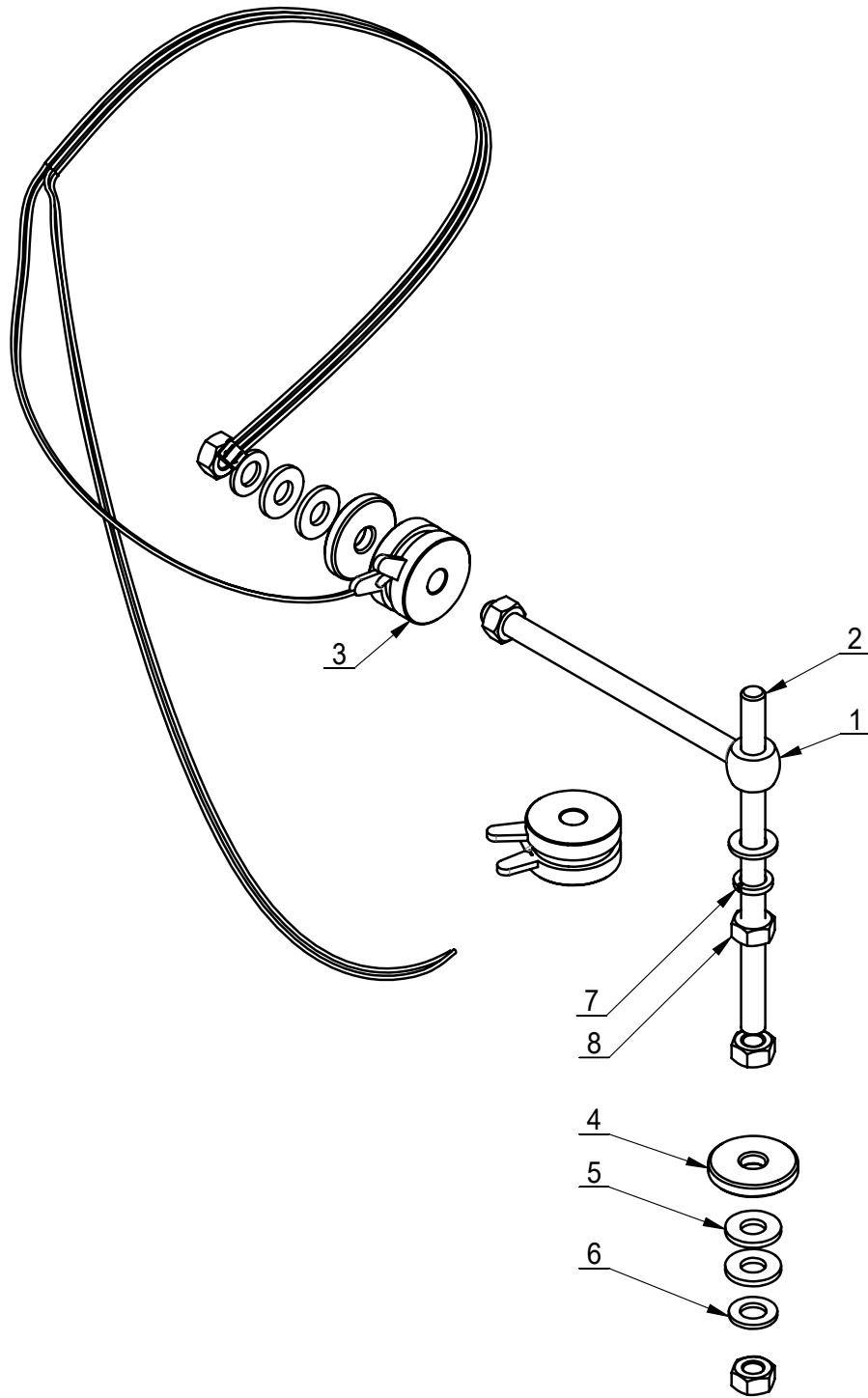
ITEM	PART.No	DESCRIPTION.	QT.Y
1	B-12-3200001RC	WEIGHT TRAY	1
2	GB96.2-3	LARGE WASHER C GRADE	6
3	GB93-3	STANDARD SPRING WASHER	6
4	GB6170-M3	HEXANGULAR NUT 1-TYPE	6
5	B-57-1220000RC	KEYPAD ASSEMBLY	1



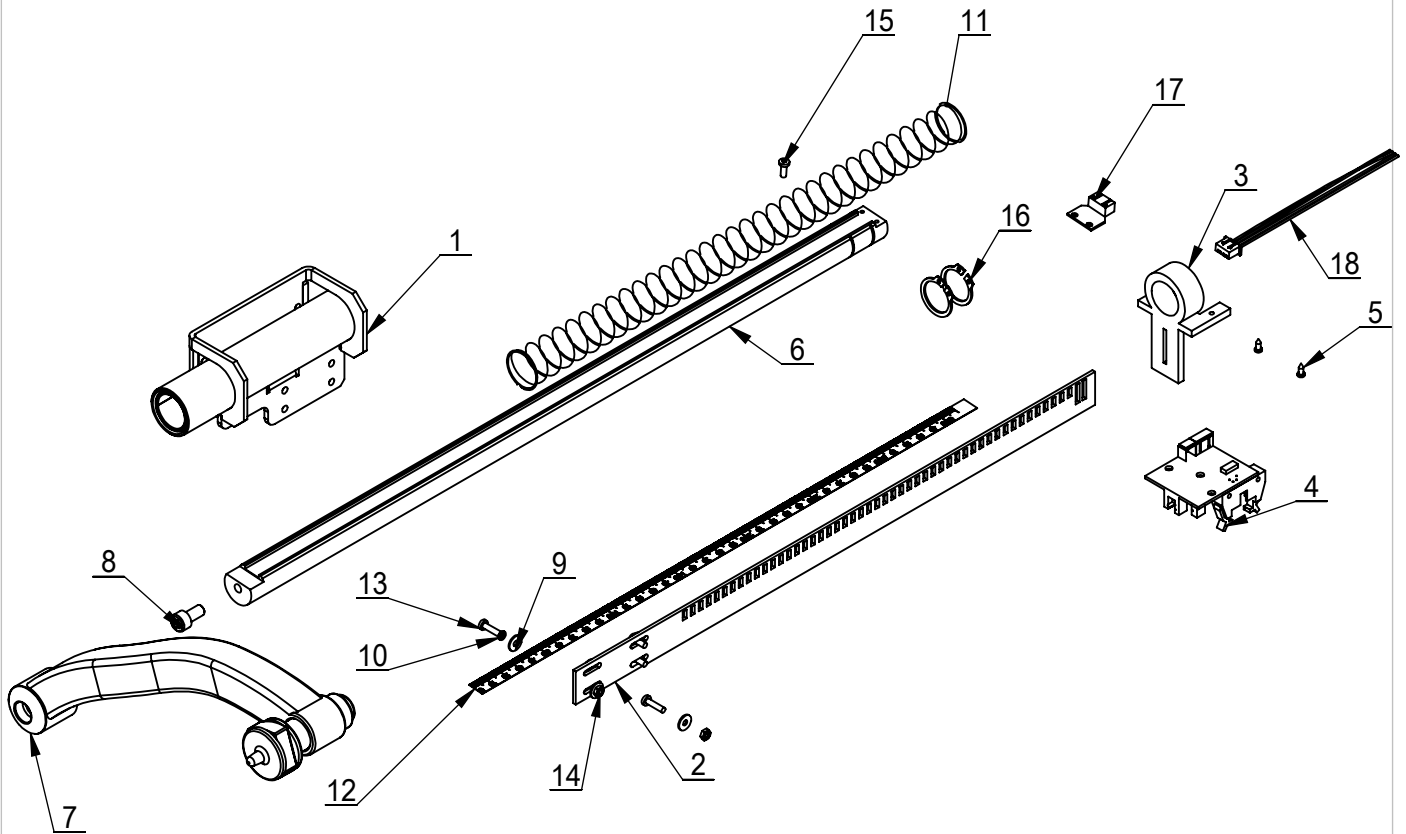
ITEM	PART. No	DESCRIPTION.	QT. Y
1	B-55-1500011	MEASURING SCALE CONNECTION	1
2	B-55-1500012	ENCODER BOARD CONNECTION WIRE	1
3	GB818-M3×10-H	CROSS PANHEAD SCREW	8
4	B-55-1500013RC	POWER BOARD	1
5	B-55-1500005RC	CPU	1
6	B-55-1500004	PILLAR	4
7	B-12-3300003	POWER BASE PLATE	1
8	GB818-M4×10-H	CROSS PANHEAD SCREW	4
9	B-01-1008005	EARTH WIRE	1



ITEM	PART.No	DESCRIPTION.	QT.Y
1	TB-P-0101000	FIXING SHAFT WELDING	1
2	TB-P-0602000L	MAIN SHAFT WELDING	1
3	TB-P-0100001	BEARING PRESS HOUSING	1
4	TB-P-0100003	PHOTOELECTRIC TOOTH	1
5	B-73-1215000	BALANCER SPINDLE	1
6	TB-P-0100009	SPRING	1
7	TB-P-0300008	SPRING PRESS COVER	1
8	TB-P-0300032	40CONE 54-78	1
9	TB-P-0300033	40CONE 74-108	1
10	TB-P-0300034	40CONE 89-158	1
11	TB-P-0300009A	CLAMP RING	1
12	GB276-6005	DEEP GROOVE BALL BEARINGS	1
13	GB276-6006	DEEP GROOVE BALL BEARINGS	1
14	GB894.2-25	SHAFT ELATIC RETAINING RING B-TYPE	1
15	GB894.2-30	SHAFT ELATIC RETAINING RING B-TYPE	1
16	GB70.1-M5×16	INNER HEXA CYLINDRICAL SCREW	4
17	GB9074.4-M4×8	SCREW	8
18	GB6170-M4	HEXANGULAR NUT 1-TYPE	2
19	TB-P-0600001	PHOTOELECTRIC SET	1
20	TB-P-0300031	40CONE 42-65	1
21	TB-P-0600011M	OPTICAL PARTITIONS	1
22	TB-P-0300029	PHOTOELECTRIC CELL PLATE	1

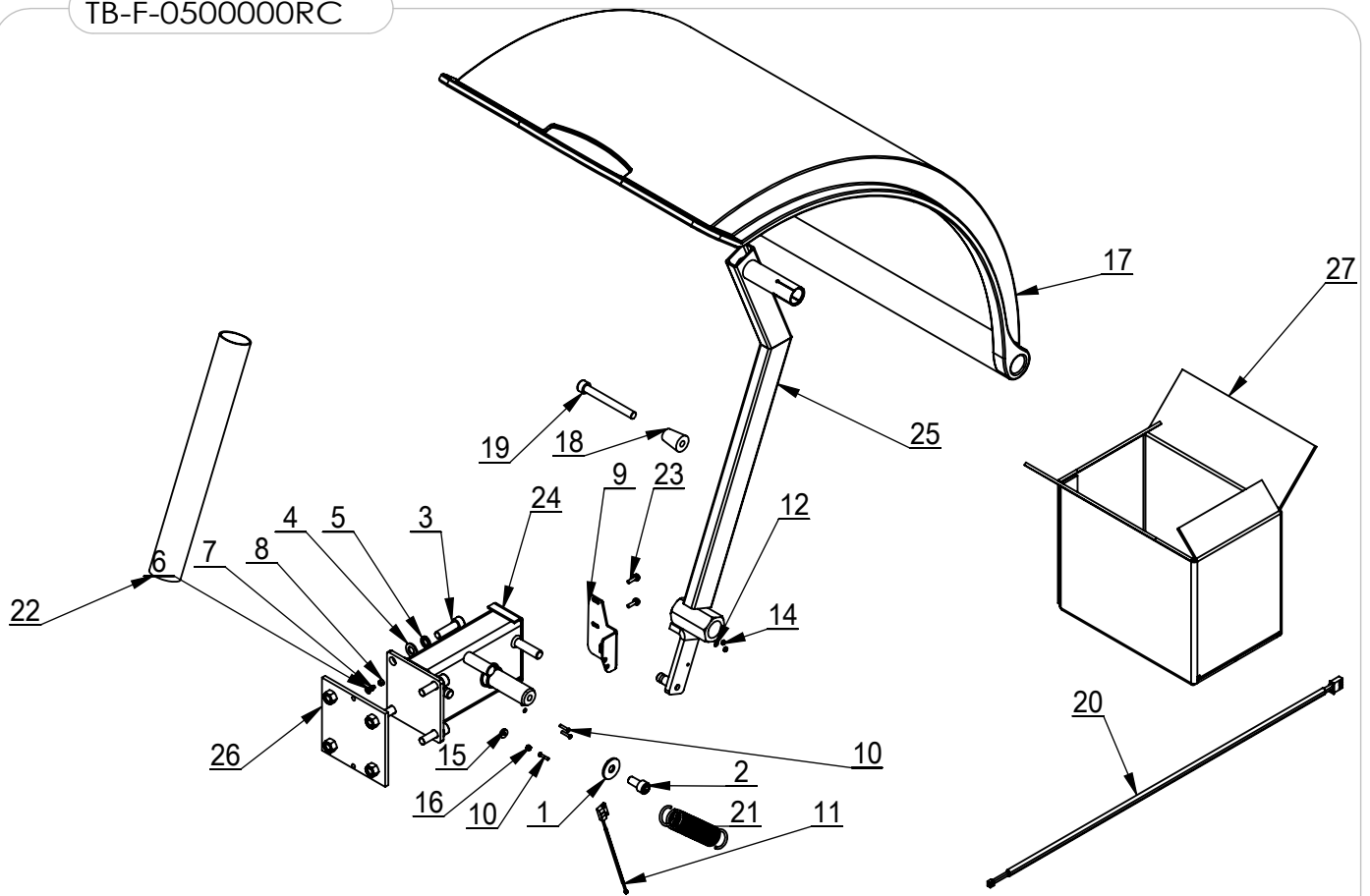


ITEM	PART.No	DESCRIPTION.	QT.Y
1	TB-P-0103000	SCREW WITH HANGING RING	1
2	TB-P-0100006	FULL BOTTON SCREW	1
3	TB-P-0100100	PIEZO ASSEMBLY	1
4	TB-P-0100005	PRESSING WASHER	2
5	DIN 6796 - 10	SPRING PIEZO WAHSER	4
6	GB95-10	FLAT WASHER	3
7	GB93-10	STANDARD SPRING WASHER	1
8	GB6170-M10	HEXANGULAR NUT 1-TYPE	5



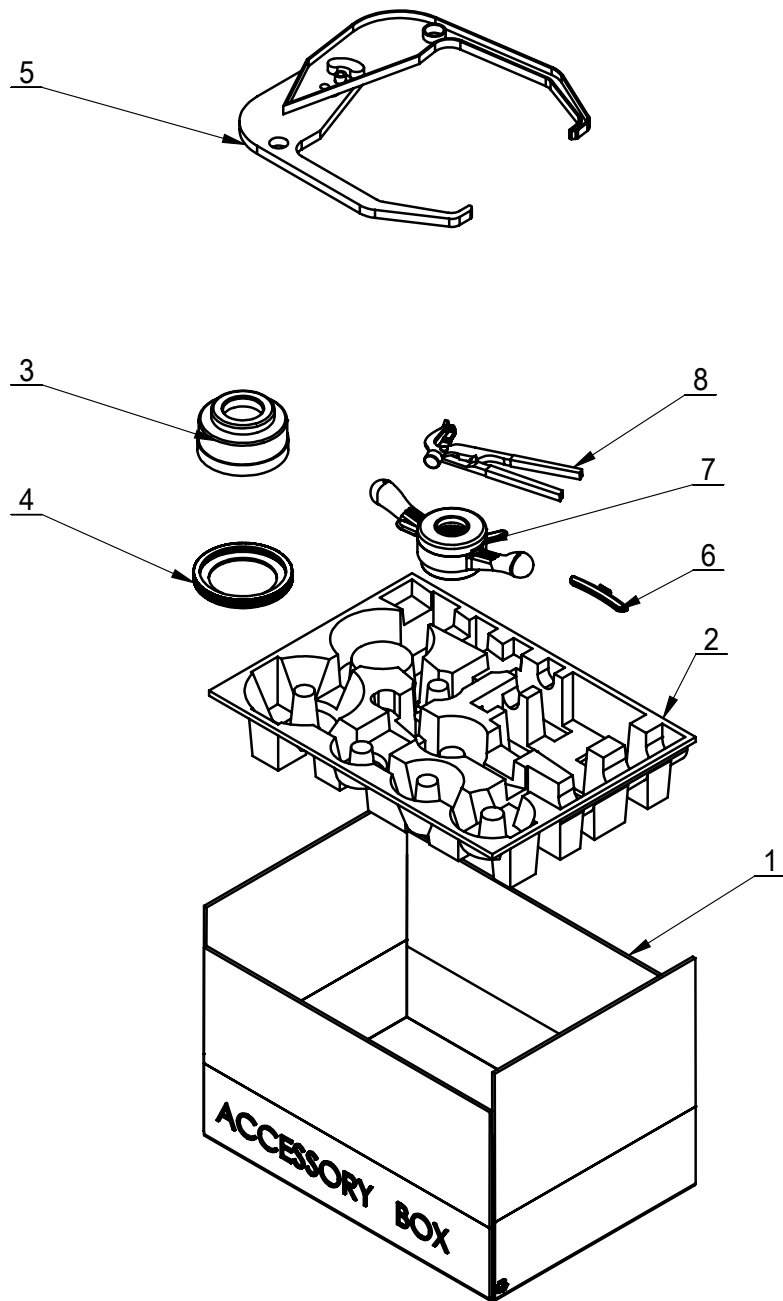
ITEM	PART.No	DESCRIPTION.	QT.Y
1	TB-L-0801000R	BRACKET ASSEMBLY	1
2	TB-L-0800004RC	GRATING	1
3	TB-L-0200005	REAR SUPPORT SLEEVE	1
4	TB-L-0200006	A VALUE SENSOR	1
5	GB845-ST2.5×6.5 H C	CROSS PANHEAD TAPPING SCREW	2
6	GB894.1-20	SHAFT ELATIC BIG RETAINING RING A-TYPE	2
7	TB-L-0800005RC	DISTANCE GAUGE ROD	1
8	TB-L-0802000	SCALE HANDLE	1
9	GB70.1-M6×12	INNER HEXA CYLINDRICAL SCREW	1
10	GB96.1-3	LARGE WASHER A GRADE	6
11	GB93-3	STANDARD SPRING WASHER	4
12	GB818-M3×12-H	CROSS PANHEAD SCREW	2
13	GB818-M3×8-H	CROSS PANHEAD SCREW	3
14	B-73-1300008	DISTANCE GAUGE SPRING	1
15	B-73-1300010	SCALE	1
16	GB6170-M3	HEXANGULAR NUT 1-TYPE	2
17	TB-L-0800006	DIGITAL ANGLE METER	1
18	TB-L-0800007	CORNER METER CONNECTION	1

TB-F-0500000RC



ITEM	PART.No	DESCRIPTION.	QT.Y
1	GB96.1-10	LARGE WASHER A GRADE	1
2	GB70.1-M10×20	INNER HEXA CYLINDRICAL SCREW	1
3	GB70.1-M10×35	INNER HEXA CYLINDRICAL SCREW	4
4	GB95-10	FLAT WASHER	4
5	GB93-10	STANDARD SPRING WASHER	4
6	GB95-4	FLAT WASHER	2
7	GB93-4	STANDARD SPRING WASHER	2
8	GB70.1-M4×12	INNER HEXA CYLINDRICAL SCREW	2
9	TB-F-0100017	PROTECTIVE PLATE	1
10	GB819.1-M3×16-H	CROSS COUNTERSUNK SCREW STEEL 4.8 GRADE	3
11	B-53-1000010	MAGNETIC SWITCH	1
12	GB95-3	FLAT WASHER	2
13	GB93-3	STANDARD SPRING WASHER	2
14	GB6170-M3	HEXANGULAR NUT 1-TYPE	2
15	TB-F-0100016	MAGNET	1
16	GB889.1-M3	1-TYPE PREVAILING TORQUE TYPE HEXAGON LOCK NUT	1
17	TB-F-0500001	HOOD	1
18	TB-F-0500104	LOCKING	1
19	GB70.1-M10×90	INNER HEXA CYLINDRICAL SCREW	1
20	B-12-3000001	PROTECTIVE COVER CONNECTION	1
21	TB-F-0500002	SUPPORT PIPE EXTENSION SPRING	1
22	TB-F-0100014	PROTECTIVE CASING	1
23	GB9074.4-M4×16	COMBINATION SCREW	2
24	TB-F-0110000	PROTECTIVE HOOD SUPPORT	1
25	TB-F-0500100RC	PROTECTIVE HOOD SUPPORTT	1
26	TB-F-0130000	CONNECTING PLATE	1
27	TB-S-0100004	ACCESSORY BOX	1

TB-S-0200000



ITEM	PART.No	DESCRIPTION.	QT.Y
1	TB-S-0100006	ACCESSORY BOX	1
2	TB-S-0100007	TRAY	1
3	TB-S-0100001	BOWL	1
4	TB-S-0100002	BOWL EDGE	1
5	TB-S-0100100	CALIPER ASSEMBLY	1
6	TB-S-0100003	WEIGHT(100g)	1
7	TB-K-0200000	40mm QUICK NUT	1
8	TB-S-0100005	BALANCE HAMMAR	1